

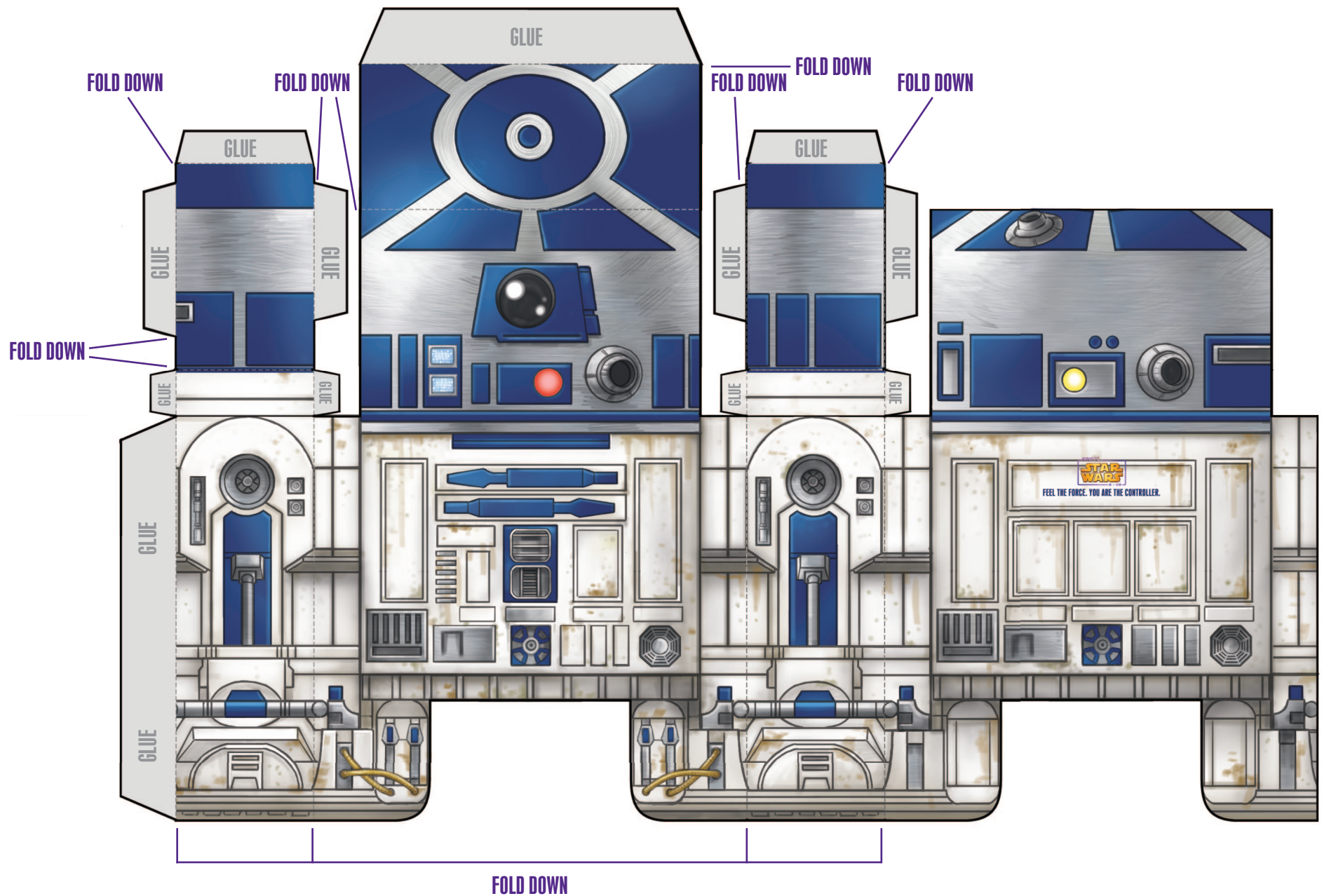


R2-D2

Instructions

1. Print out on card stock, or print on paper, and glue to thin cardboard, such as a cereal box.
2. Cut out along solid lines.
3. Carefully score along dashed lines marked "Fold Down."
4. Glue body together.
5. Enjoy the services of your own astromech droid.





STAR WARS™ and © 2012 Lucasfilm Ltd. All rights reserved. Used under authorization.
© 2012 Microsoft Corporation. All rights reserved. Reproduction permitted solely for personal and noncommercial use.

